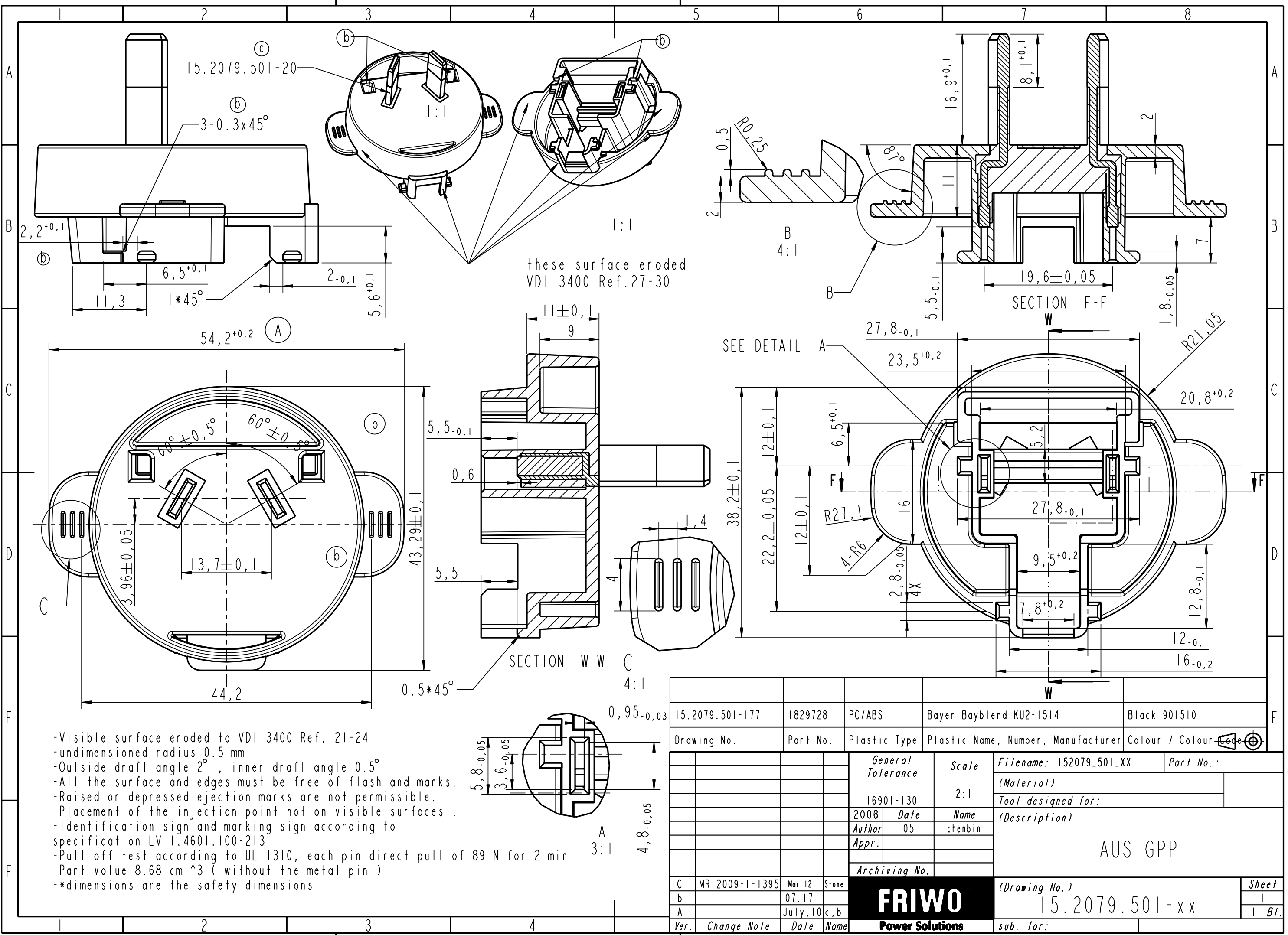


Copying of this document, and giving it to others and the use or communication of the contents thereof, are forbidden without express authority. Offenders are liable to the payment of damages. All rights are reserved in the event of the grant of a patent or the registration of a utility model or design.



- Visible surface eroded to VDI 3400 Ref. 21-24
- undimensioned radius 0.5 mm
- Outside draft angle 2°, inner draft angle 0.5°
- All the surface and edges must be free of flash and marks.
- Raised or depressed ejection marks are not permissible.
- Placement of the injection point not on visible surfaces.
- Identification sign and marking sign according to specification LV 1.4601.100-213
- Pull off test according to UL 1310, each pin direct pull of 89 N for 2 min
- Part volue 8.68 cm<sup>3</sup> ( without the metal pin )
- \*dimensions are the safety dimensions

15.2079.501-177		1829728	PC/ABS	Bayer Bayblend KU2-1514	Black 901510
Drawing No.	Part No.	Plastic Type	Plastic Name, Number, Manufacturer		Colour / Colour Code
		General Tolerance		Scale	Filename: 152079.501_XX Part No.:
		16901-130		2:1	(Material)
		2008	Date	Name	Tool designed for:
		Author	05	chenbin	(Description)
		Appr.			
		Archiving No.			
C	MR 2009-1-1395	Mar 12	Stone	AUS GPP	
b		07.17		(Drawing No.)	
A		July, 10	c,b	15.2079.501-xx	
Ver.	Change Note	Date	Name	sub. for:	
<b>FRIWO</b>					
Power Solutions					
				Sheet 1 of 1	